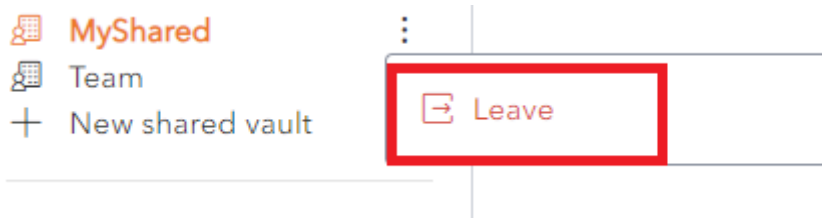


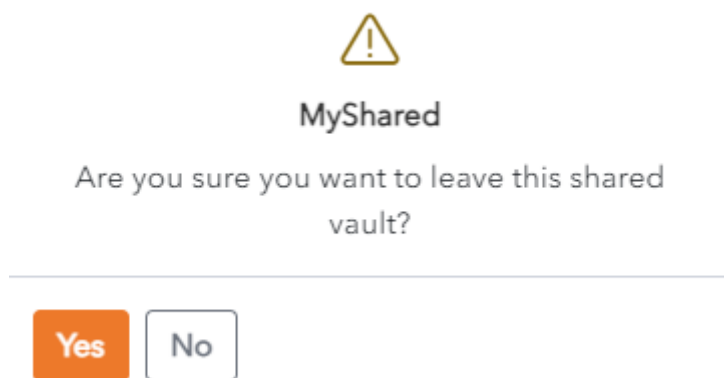
# Leave a Shared Vault

To **leave a Shared Vault**, click on the **More** button beside the Shared Vault.

A context menu is displayed.



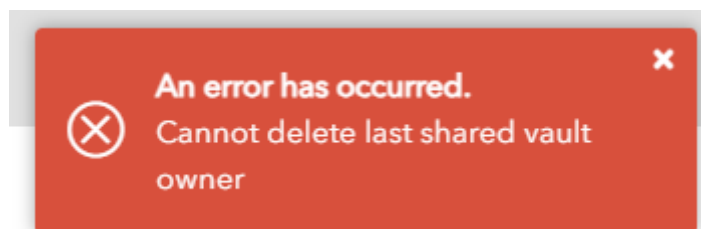
Click the **Leave** link. A **Confirmation pop up screen** is displayed.



Click **Yes** to leave the Shared Vault.

Click **No** to cancel the operation.

**Note:** If you are the last remaining Vault Owner, you are not permitted to leave the Shared Vault. In this case the following message is displayed.



---

Revision #1

Created 21 November 2023 14:19:29 by WALLIX Admin

Updated 23 February 2024 10:07:49 by WALLIX Admin